

# OCR

Oxford Cambridge and RSA

## Monday 4 November 2019 – Morning

### GCSE (9–1) English Language

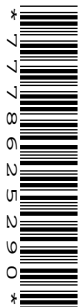
**J351/01** Communicating information and ideas

Reading Insert

**Time allowed: 2 hours**

**You must have:**

- the Question Paper



#### **INSTRUCTIONS**

- The materials in this Reading Insert are for use with the questions in Section A of the Question Paper.

#### **INFORMATION**

- This document consists of **8** pages. Any blank pages are indicated.

**BLANK PAGE**

**Details of text extracts:****Text 1**

Text: adapted from *Illustrations of Instinct*

Author: Jonathan Couch (1847)

**Text 2**

Text: adapted from *Dogwatching*

Author: Desmond Morris (1996)

**Text 1**

*Jonathan Couch was a scientist who spent his life trying to understand animal behaviour. Here he describes the behaviour of a dog he has observed closely.*

That animals possess much individuality of character is well-known. I have the opportunity of frequently observing the conduct of a dog who, throughout his life, has displayed a good nature which distinguishes him from other dogs. He is of the Newfoundland breed and was born in some part of North America.

5 Being of robust stature, it was thought that he might be valuable on board a ship. He would have fulfilled the expectations of the owner if he had been required to plunge into the ocean to save a man from drowning, but he could not be made to understand that men could be otherwise than honest. Therefore, being judged too quiet for his situation, the poor dog was turned adrift in an English port to obtain food and shelter wherever he could find it.

10 His fine appearance and docility soon obtained him a new master, but the same fault accompanied him, and it could not be believed that he could be of any service when he would not snarl at a stranger or quarrel with a neighbour.

15 Twice therefore was this dog turned out to seek his casual fortune. Though a little food would have been enough, the poor dog was in danger of being starved, when a little boy took compassion on his lank appearance and mild deportment. He obtained permission to assign the dog a resting-place in his own home with the condition that, to provide the dog with food, the boy would, in case of necessity, share with him a portion of his own.

20 By the boy's parents this was a reluctant permission, but the dog's affectionate behaviour soon succeeded in effecting a reconciliation. It is amusing to see how fondly this poor creature is now attached to all the members of the protecting family. When you give attention to the dog, it responds with an inward rather than an outward rejoicing, and he will suffer without a murmur a rejection – and even an expulsion from a favourite situation – on the utterance of a single command.

25 He appears pleased with the liberties taken with him by children. When the children become an annoyance, however, his displeasure is shown by an unceremonious thrust that lays them prostrate. On one occasion, when a child was riding on his back, after suffering it for a while, the dog disposed of the inconvenience by dismounting the rider into the gutter.

**Text 2**

*Desmond Morris was a scientist who observed the behaviour of dogs very closely. Here he describes the relationship between dogs and human beings.*

In the whole of human history only two kinds of animals have been allowed the freedom of our homes: the cat and the dog. With them we have a special relationship, an ancient contract, with specific terms of agreement.

5 Sadly, these terms have often been broken, and nearly always by us. It is a sobering thought that cats and dogs are more loyal, trustworthy and reliable than human beings. Very occasionally they turn on us and bite us, or run away and leave us but, when this happens, there is usually a piece of human stupidity or cruelty lurking in the background to provide a cause. Most of the time dogs unswervingly fulfil their half of the age-old bargain we have struck with them and shame us by their conduct.

10 Had it been written down, this bargain would have stated that the dog performs certain tasks for us, and we, in return, provide it with companionship and care. The tasks dogs have been asked to carry out have been many and varied. Dogs have been required to guard our homes, protect our persons, aid our hunts, destroy our vermin and pull our sledges. As these earlier tasks have faded in importance, however, a new role has emerged. The work dog has largely  
15 been replaced by the pet dog.

By simple, direct observation, it is possible to understand and appreciate these remarkable animals in great and surprising detail. They have so much to offer us: they are playful companions when we are in the mood for fun; they are loving companions when we are lonely or depressed; they are calming companions when we become agitated or apprehensive.

20 Those disturbed individuals who pour out hatred for dogs will be unaware of an intriguing fact: those who keep dogs live longer on average than those who do not. The calming influence of a friendly pet animal reduces blood pressure and, therefore, the risk of a heart attack. To pat, stroke or cuddle a dog has a destressing influence that goes directly to the root cause of so many of today's cultural ailments.

25 Many of us suffer from too much tension and too much stress in the hustle of modern urban living where minute-by-minute considerations demand a whole range of conflicting compromises. By contrast, the friendly contact of a pet dog serves to remind us of the survival of simple innocence even inside the dizzy whirlpool we refer to as civilisation.

**BLANK PAGE**

**BLANK PAGE**

---

# OCR

Oxford Cambridge and RSA

## Copyright Information

OCR is committed to seeking permission to reproduce all third-party content that it uses in its assessment materials. OCR has attempted to identify and contact all copyright holders whose work is used in this paper. To avoid the issue of disclosure of answer-related information to candidates, all copyright acknowledgements are reproduced in the OCR Copyright Acknowledgements Booklet. This is produced for each series of examinations and is freely available to download from our public website ([www.ocr.org.uk](http://www.ocr.org.uk)) after the live examination series.

If OCR has unwittingly failed to correctly acknowledge or clear any third-party content in this assessment material, OCR will be happy to correct its mistake at the earliest possible opportunity.

For queries or further information please contact The OCR Copyright Team, The Triangle Building, Shaftesbury Road, Cambridge CB2 8EA.

OCR is part of the Cambridge Assessment Group; Cambridge Assessment is the brand name of University of Cambridge Local Examinations Syndicate (UCLES), which is itself a department of the University of Cambridge.