



Cambridge International Examinations
Cambridge International General Certificate of Secondary Education

CANDIDATE
NAME

CENTRE
NUMBER

--	--	--	--	--

CANDIDATE
NUMBER

--	--	--	--



BIOLOGY

0610/53

Paper 5 Practical Test

May/June 2017

1 hour 15 minutes

Candidates answer on the Question Paper.

Additional Materials: As listed in the Confidential Instructions.

READ THESE INSTRUCTIONS FIRST

Write your Centre number, candidate number and name on all the work you hand in.

Write in dark blue or black pen.

You may use an HB pencil for any diagrams or graphs.

Do not use staples, paper clips, glue or correction fluid.

DO NOT WRITE IN ANY BARCODES.

Answer **all** questions.

Electronic calculators may be used.

You may lose marks if you do not show your working or if you do not use appropriate units.

At the end of the examination, fasten all your work securely together.

The number of marks is given in brackets [] at the end of each question or part question.

For Examiner's Use	
1	
2	
Total	

The syllabus is approved for use in England, Wales and Northern Ireland as a Cambridge International Level 1/Level 2 Certificate.

This document consists of **10** printed pages and **2** blank pages.

2

1 Vitamin C is an important component of many fruits and vegetables.

The vitamin C content of a vegetable juice extract can be determined by carrying out a 'titration'. This is done by adding drops of iodine solution to a vegetable juice extract until a blue-black colour appears. The more iodine solution that needs to be added, the more vitamin C there is in the vegetable juice extract.

You are going to investigate the vitamin C content in the solutions of different vegetable juice extracts labelled **P**, **Q** and **R**.

You are also provided with a starch solution and an iodine solution.

Read all the instructions but DO NOT CARRY THEM OUT until you have drawn a table for your results in the space provided in 1(a).

You should use the gloves and eye protection provided while you are carrying out the practical work.

Step 1 Label a large test-tube **P**.

Step 2 Use a syringe to add 10 cm³ of solution **P** into the large test-tube labelled **P**.

Step 3 Use a clean syringe to add 0.5 cm³ of starch solution to large test-tube **P** and mix well by swirling.

Step 4 Fill a clean syringe with 10 cm³ iodine solution.

Step 5 Add one drop of the iodine solution from the syringe to solution **P**. Swirl the mixture for 5 seconds.

Step 6 Repeat step 5 until the solution remains blue-black. Refill your syringe with iodine solution if necessary.

Step 7 Record the total volume of iodine solution used for solution **P** in the table you have prepared in **1(a)**.

Step 8 Repeat steps 1 to 7 for solution **Q**.

Step 9 Repeat steps 1 to 7 for solution **R**.

3

Fig. 1.1 shows the apparatus for this investigation.

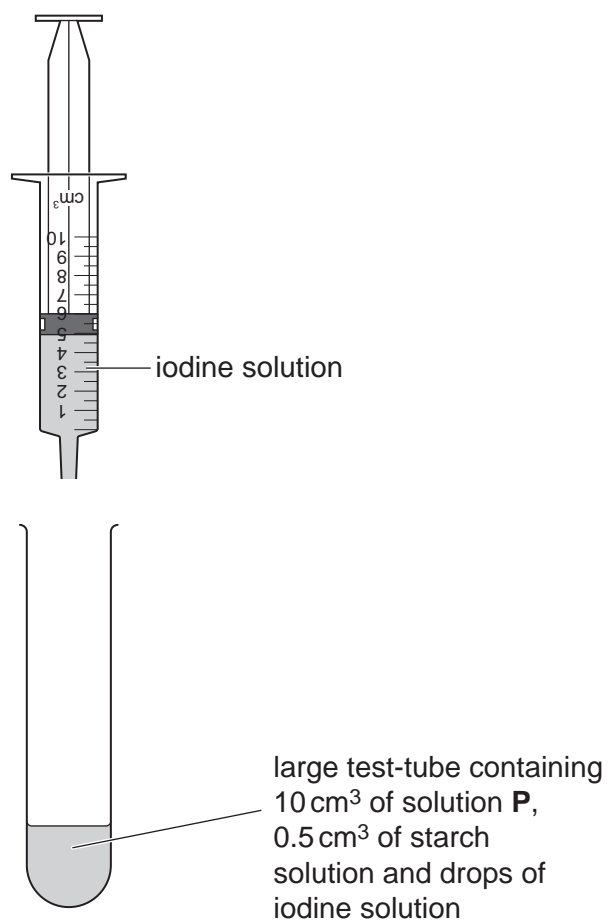


Fig. 1.1

(a) Use this space to prepare a table to record your results.

(b) Explain why the starch solution was added to the vegetable juice extracts.

.....

[1]

(c) State **two** variables that were kept constant in this investigation.

1
 2 [2]

(d) Identify **two** sources of error in this investigation and suggest a possible improvement for each error.

error

 improvement

 error

 improvement
 [4]

(e) A student was given a concentrated solution of vitamin C.

The solution contained 1000 mg of vitamin C in 100 cm³ of distilled water.

The student made four dilute solutions of vitamin C, using the volumes of concentrated vitamin C solution and distilled water shown in Table 1.1.

Table 1.1

solution	volume of concentrated vitamin C solution added/cm ³	volume of distilled water added/cm ³	final volume /cm ³	vitamin C content in the final solution/mg
K	50.00	0.00	50.00	500.0
L	25.00		50.00	250.0
M	12.50	37.50	50.00	125.0
N	6.25	43.75	50.00	

(i) Calculate the volume of distilled water added to make solution **L** and the vitamin C content of solution **N**. Write your answers in Table 1.1. [3]

The student recorded the volume of iodine solution needed to change solutions **K**, **L**, **M** and **N** to a blue-black colour.

Fig. 1.2 shows their results.

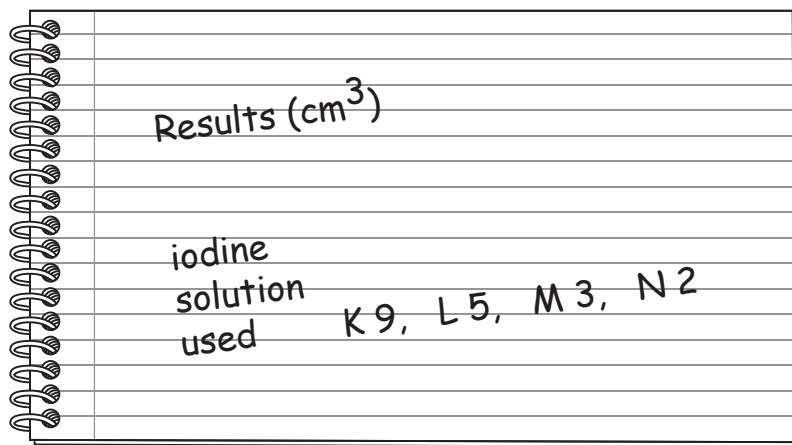
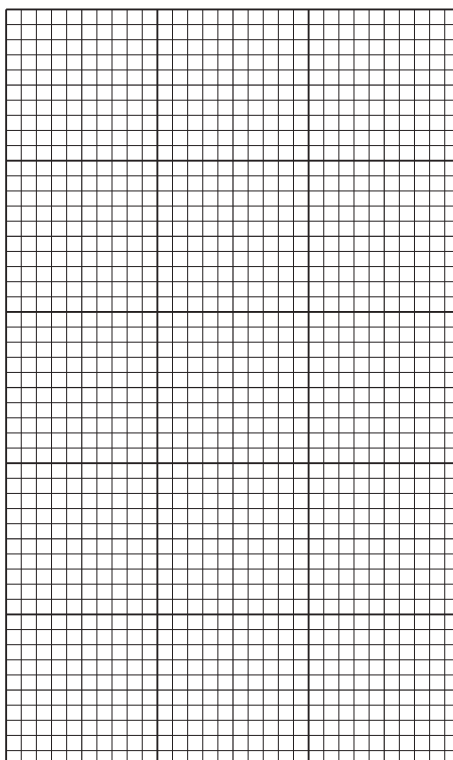


Fig. 1.2

- (ii) Plot a graph on the grid of the vitamin C content of the final solutions shown in Table 1.1 against the volume of iodine solution used by the student shown in Fig. 1.2.

Add a line of best fit.



[4]

BLANK PAGE

8

2 The small intestine is involved in the digestion and absorption of food.

Fig. 2.1 shows a photomicrograph of cross-sections of villi in the small intestine.

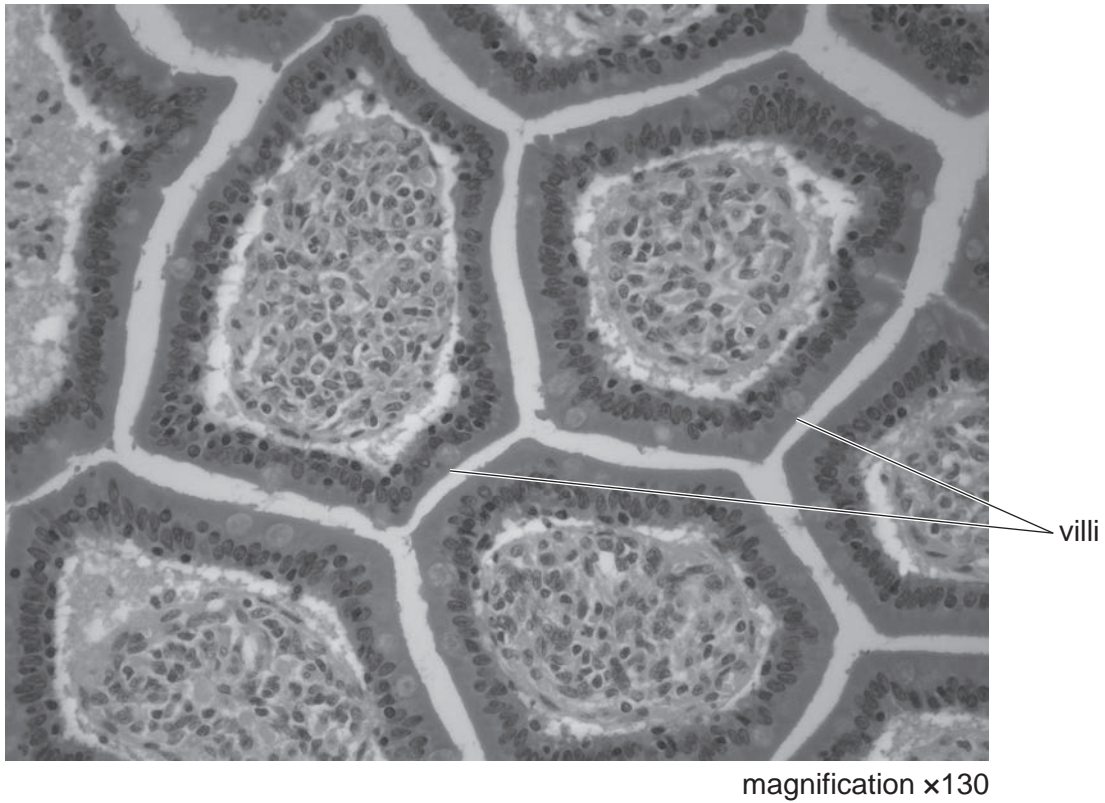


Fig. 2.1

(a) Make a large drawing of the two labelled villi shown in Fig. 2.1.

Do not draw individual cells.

- (b) Fig. 2.2 is a photomicrograph that shows a cross-section of part of the wall of the small intestine.



Fig. 2.2

- (i) The actual length of line **PQ** on Fig. 2.2 is 1.25 mm.

Measure the length of line **PQ** on Fig. 2.2. Include the unit.

length of **PQ**

Calculate the magnification of Fig. 2.2 using the equation:

$$\text{magnification} = \frac{\text{measured length of line PQ}}{\text{actual length of line PQ}}$$

Show your working.

.....
[3]

- (ii) Describe **two** ways in which the photomicrograph in Fig. 2.2 is different from the photomicrograph in Fig. 2.1.

1

.....

2

.....

[2]

- (c) Digestion of starch occurs in the small intestine.

A student investigated the effect of temperature on the digestion of starch by amylase.

The student set up three tubes at different temperatures, each containing starch, amylase and iodine solution. The student calculated the rate of reaction and recorded it in Table 2.1.

Table 2.1

tube	temperature/°C	rate of reaction/arbitrary units			
		trial 1	trial 2	trial 3	average
A	10	2	6	1	
B	20	8	9	10	
C	30	12	10	11	

- (i) Calculate the average rate of reaction for each tube. Write your answers in Table 2.1.

Space for working.

[1]

- (ii) Identify the optimum temperature for the digestion of starch in this experiment **and** give a reason for your choice.

optimum temperature

reason

.....

.....

[2]

- (iii) One of the students decided that the result collected for tube **A** during trial 2 was anomalous.

Suggest a reason for their decision.

.....
.....
.....[1]

- (iv) The independent variable is the variable that is changed in an investigation. The dependent variable is the variable that is measured in an investigation.

Identify the independent and dependent variables in this investigation.

independent variable
.....
dependent variable
..... [2]

[Total: 15]

BLANK PAGE

Permission to reproduce items where third-party owned material protected by copyright is included has been sought and cleared where possible. Every reasonable effort has been made by the publisher (UCLES) to trace copyright holders, but if any items requiring clearance have unwittingly been included, the publisher will be pleased to make amends at the earliest possible opportunity.

To avoid the issue of disclosure of answer-related information to candidates, all copyright acknowledgements are reproduced online in the Cambridge International Examinations Copyright Acknowledgements Booklet. This is produced for each series of examinations and is freely available to download at www.cie.org.uk after the live examination series.

Cambridge International Examinations is part of the Cambridge Assessment Group. Cambridge Assessment is the brand name of University of Cambridge Local Examinations Syndicate (UCLES), which is itself a department of the University of Cambridge.